



粉、粒状物料处理设备 Bulk solid material handling Equipment



苏州麦科威化工设备有限公司
MECHWELL CHEMICAL MACHINERY CO.,LTD.

地址:中国江苏省张家港市经济开发区振兴路34号
ADD:No.34,Zhenxing Rd.Economic Development Zone,
Zhangjiagang City,Jiangsu Province,215600,P.R.China
邮编(P.C.):215600
电话(TEL):+86-512-5891 9222
传真(FAX):+86-512-5891 9169
Http://www.mechwell.com.cn
E-mail:info@mechwell.com.cn

苏州麦科威化工设备有限公司
MECHWELL CHEMICAL MACHINERY CO.,LTD.

目录 | Contents



■ 气力输送部件 Components for Pneumatic Conveying System	
翻板式重力换向阀DVF Flap Type Diverter Valve DVF	01
双通道换向阀DVC Two-way Diverter Valve DVC	02
直吹式旋转阀RVB Blow Through Type Rotary Valve RVB	03
落料式旋转阀RVD Drop Through Type Rotary Vale RVD	04
粒料旋转阀RVG Pellets Type Rotary Valve RVG	05
高压旋转阀RVG/H High Pressure Rotary Valve RVG/H	06
■ 机械和输送 Machine and Conveying	
插板阀SGV Slide Gate Valve SGV	07
旋转式结块破碎机 Rotary Lump Breakers	08
螺旋加料器DSA Screw Feeder DSA	09
管链输送TCA Tube Chain Conveyor TCA	10
■ 过滤和除尘 Filter and Dust Collector	
排气过滤器VF Ventilation Filter Type VF	11
袋式过滤器BF Bin Filter Type BF	12
粉尘收集器DC Dust Collector DC	13
■ 称量 Weigher	
助剂电子秤ADW Additives Weighing Station ADW	14
小料配料机 Additives Batching Scale ABS	15
■ 筛分 Sifter	
振动流化床冷却/干燥机FBS Vibration Fluid-bed Cooler/Dryer FBS	16
振动筛S10/5-II Vibration Screen S10/5-II	17
■ 混合 Mixing	
卧式双螺带混合机WHS Horizontal Double Ribbon Blender WHS	18
犁刀混合机WHP Shovel & Chopper Blender WHP	19
热/冷混合机组RH/LH Heating/Cooling Mixer Combination RH/LH	20
■ 气力输送系统 Pneumatic Conveying System	
真空吸料机VLF/VLG Vacuum Hopper Loader VLF/VLG	21
气力输送系统 Pneumatic Conveying System	22
正压气力输送系统(稀相) Positive Pressure Conveying System (Dilute Phase)	23
负压输送系统(稀相) Negative Pressure Conveying System (Dilute Phase)	24
粒料低速气流输送系统(密相) Slow Motion Conveying System for Granules (Dense phase)	25
高压发送罐输送系统(密相) High-pressure Blow Tank Conveying System (Dense phase)	26
PVC全自动配料、混料、输送系统 PVC Automatic Mixing, Batching and Extruder Feeding System	27

企业简介 Mechwell

麦科威公司致力于为塑料行业，化工及石化行业提供散装物料的处理系统及其相关的机械和部件。对物料特性的掌握和对物料处理工艺过程的全面了解是我们的长处。我们善于解决物料在输送，储存，称重计量，配料混合以及过筛过程中存在的问题并提供最佳的解决方案和整体项目规划，并最终建设一个依据客户需求量体裁衣的交钥匙工程。

凭借多年积累的全面经验和孜孜以求的创新理念，我们为市场提供高质量和高技术含量的产品。我们不但拥有机械制造的能工巧匠，也具备现代化的制造方法，这些正是精密产品的有力保证。

本公司目前生产下列产品：

- 塑料高速混合机和冷却混合机，最大到2000升高混和6000升冷混。
- 卧式双螺带混合机，最大到6000升
- 犁刀混合机，最大到6000升
- 电脑控制的自动配料混料系统
- 全自动配料、混料和气力输送系统
- 用于气力输送的部件包括旋转阀，换向阀，插板阀和除尘过滤器
- 用于粉料和粒料的气力输送系统
- 用于粉料和粒料的振动筛，振动流化床冷却/干燥机
- 用于粉料和粒料的真空吸料机，最大输送量到10吨/小时
- 用于粉料和粒料的螺旋输送机，最大螺杆直径到500毫米
- 用于粉料和粒料的管链输送机，最大产量到50m³/小时

Company Profile

Mechwell focus on building bulk solid material handling plant and supplying related machines and fabricating parts and components to plastic, chemical and petrochemical industries.

Our long suits are the best understanding of bulk material properties and the handling process. We are good at solving problems which exist in bulk solids conveying, storage, dosing and weighing, mixing and screening. Meanwhile, offering optimal solutions and proposals of the whole project. Eventually, Mechwell will provide you with an ideal project which acts according to your demands.

With comprehensive experience, creative and innovative emotion. Mechwell uses high technology and develops high-quality products for the market. Highly qualified and skilled workers、modern producing methods ensure that Mechwell has precise products and flexible systems.

We provide below machines and plants to domestic and international market:

- High speed mixer and cooling mixer unit, capacity up to 2,000 liters for hot mixer and 6,000 liters for cooling mixer.
- Horizontal double speed blender, capacity up to 6,000 liters
- Shovel & Chopper Blender, capacity up to 6,000 liters
- Automatic batching and mixing plant for PVC
- Automatic dosing, weighing, mixing and pneumatic conveying plant.
- Components for pneumatic conveying such as Rotary valve, Diverter valve, Slide gate valve and de-dusting & vent filters.
- Pneumatic conveying system for bulk solid material
- Vibration screen for powder & pellets, Vibration Fluid-bed Cooler/Dryer
- Vacuum loaders for powder & pellets, capacity up to 10t/h
- Screw conveyor for powder and pellets, maximum screw diameter 500mm
- Tubular chain conveyor for powder and pellets, maximum capacity 50 cum/hr

翻板式重力换向阀DVF

Flap Type Diverter valve DVF

应用:

用于粉、粒状物料从上游设备向下游设备重力下料时双向分配或汇集,或低压气力输送。

特点:

翻板式阀板,可带料换向。结构简单,重量较轻,适合于安装在输送管线上。可气动或手动,带阀板位置信号反馈,带安全罩。

尺寸:

DN80—DN400 可选择采用ISO标准 (HG20615-97;HG20592-97)

材料:

阀体: 不锈钢或碳钢

转子: 不锈钢或碳钢

使用工况:

使用温度: -25 到 150℃



Application:

As a distributing or collection unit for powders and granular materials which are gravity down from upstream equipment to downstream equipment. Or installed on pipe line for lower pressure pneumatic conveying.

Feature:

Flap type rotor, diverting with product is possible. Simple structure, lower weight, easy for installed on pipeline for pneumatic conveying. Pneumatic cylinder control or manual operation, with valve plate status signal display, with safety hood.

Size: DN80 up to DN400 Options of ISO standard are possible. (HG20615-97; HG20592-97)

Material:

Housing: Stainless steel, or Carbon Steel

Rotor: Stainless steel, or Carbon Steel

Operation conditions:

temperature range: -25 up to 150℃, pressure range: 0.1 MPa

尺寸表 Dimensions

Type 型号	Inlet 进料口	Outlet 出料口	Diverting angle 分配角度 Degree 度	Weight 重量(kg)
DVF80	DN80	DN80	30-60	12
DVF100	DN100	DN100	30-60	19
DVF125	DN125	DN125	30-60	26
DVF150	DN150	DN150	30-60	31
DVF200	DN200	DN200	30-60	40
DVF250	DN250	DN250	30-60	50
DVF300	DN300	DN300	30-60	75
DVF350	DN350	DN350	30-60	90
DVF400	DN400	DN400	30-60	110

双通道换向阀DVC

Two-way Diverter Valve DVC

应用:

用于化工、塑料、食品等行业。在气力输送管线中,作为改变物料流动方向的切换装置使用。适用于粉料或粒料的收集或分配。

特点:

- 双通道设计,换向时间短,压力损失小
- 通道完全畅通,没有死角,不会有物料残留
- 采用标准气动执行机构或气缸驱动,动作更可靠
- 带有手动换向接头
- 带有随机位置指示器,也可以通过电信号将位置信号发给电控系统
- 完全密封的结构,适合于室外安装

Application:

For chemical, plastic and food Industries, installed in a pneumatic conveying line work as a diverting device for distributing or collecting of powder or granular bulk solid material.

Feature:

- Two-way channel design, short diverting time, lower pressure loss
- Smooth transitions without changing cross-section, non product remain
- Standard pneumatic actuator or pneumatic cylinder, reliable performance
- Adaptor for manual operation
- Position indicator and device for position signal transition
- Fully sealing structure suitable for out door installation



压力范围: 最高0.5 MPa

使用温度: 最高 120℃

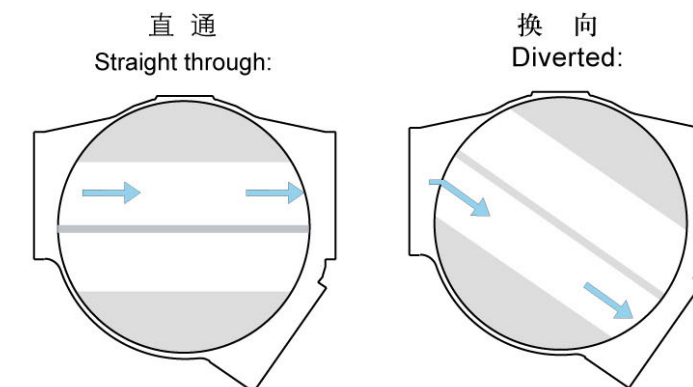
材料: 阀体: 铸铝+不锈钢通道内衬;

转子: 铸铝+不锈钢通道内衬

Pressure range: up to 0.5 MPa

Temperature range: up to 120℃

Material: Housing and rotor: Cast Aluminum with SS pipe lined



尺寸表 Dimensions

Type 型号	Pipe size 管道直径 (DIN)	(ANSI)	Chanel Dia 通道直径(mm)	Diverting angle 分配角度	Weight 重量(kg)
DVC71	DN65	2 1/2 "	71	36.67	44
DVC84	DN80	3"	84	36.6	51
DVC102/108	DN100	4"	102/108	35	66
DVC127	DN125	5"	127	35.5	106
DVC134	DN125	5"	134	35.5	119
DVC152	DN150	6"	152	35.92	145
DVC212	DN200	8"	212	34.8	350

直吹式旋转阀RVB

Blow Through Type Rotary Valve RVB

应用:

直吹式旋转阀, 用于粉料气力输送系统中做为可控加料装置。

特点:

- 由于优化设计的进料口和直吹通道, 进而提高了输送能力。
- 不受转速和压力影响的高填充效率
- 通道压力损失小

Application:

Blow-through rotary valve for product feeding of powders into pneumatic conveying systems.

Feature:

- Maximized product capacity due to optimization of inlet, rotor volume and blow-through channel
- Highest filling efficiency independent of rpm and pressure
- Low pressure drop in blow-through channel

转子直径: 150 – 500mm

材料:

阀体: 不锈钢304

转子: 不锈钢304

使用压力: 最高0.15MPa

使用温度: 最高: 120℃

Rotor Diameter: 150-500mm

Materials:

Housing cast aluminum, grey cast iron, cast stainless steel surfaces nickel plated, hard chromium plated, hard coated

Rotor: stainless steel

Pressure range: up to 1.5 MPa

Temperature range: up to 120℃



尺寸表 Dimensions

Type 型号	升/转	Inlet flange 进口法兰							Weight 重量(kg)	
					(ANSI)		(DIN)			
	Ltr/rev	ΦA	ΦB	F	Z-Φd	ΦT±0.3	Z-Φd	ΦT±0.3	Al	SS
RVB150	3.1	280	162	14	8-22.2	214.3	8-22	240	55	100
RVB200	6.4	343	210	16	8-22.2	298.4	8-22	295	65	120
RVB250	11.6	406	265	20	12-25.4	361.9	12-22	350	80	150
RVB300	21.6	483	316	20	12-25.4	431.8	12-22	400	130	230
RVB350	41	534	360	20	12-28.6	476.2	16-22	460	170	310
RVB400	65	597	410	20	16-28.6	539.8	16-26	515	230	450
RVB500	110	700	515	22	20-31.8	635	20-26	620	370	700

落料式旋转阀RVD

Drop Through Type Rotary Valve RVD

应用:

安装于上下料斗或料斗与输送管线之间, 作为一种计量给料或可控重力下料装置使用, 也适合于粉状或粉料加粒状物料在气力输送系统中使用, 使用压差最高可达0.15Mpa。

特点:

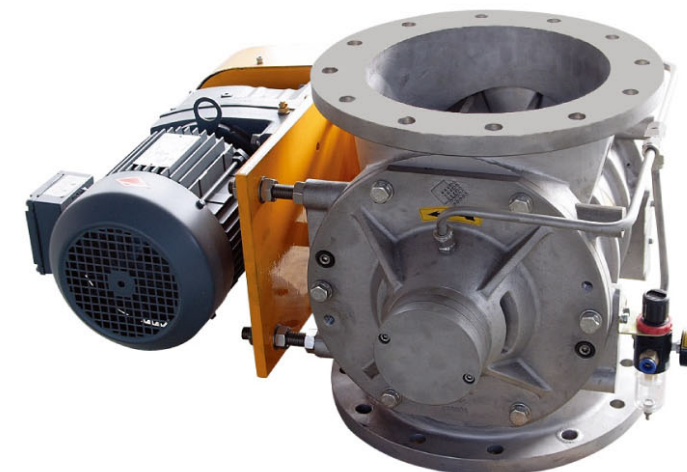
由于优化设计的进料口和转子, 进而提高了输送能力。不受转速和压力影响的高填充效率。

Application:

As a metering and discharge valve under separators and bins, for powders, or as a feeding unit in pneumatic conveying systems. Suitable for pressure difference up to 0.15Mpa.

Feature:

Maximized product capacity due to optimization of inlet and rotor volume. High filling efficiency independent of rpm and pressure.



转子直径:

150 – 630 mm

使用压差: 0.15 Mpa

使用温度: 最高250℃

连接法兰尺寸: DIN2501 PN10或ANSI 150lbs

材料: 阀体: 不锈钢304

转子: 不锈钢304

Rotor Diameter:

150- 630mm

Differential pressure: 0.15 Mpa

Temperature range: up to 250℃

Flange connection dimensions: as per DIN2501 PN 10 or ANSI150 lbs.

Material: Housing: Stainless steel

Rotor: Carbon steel

尺寸表 Dimensions

Type 型号	ca.Ltr./U Standard	(ANSI)		(DIN)		Weight 重量(kg)	
		Φd×Z	ΦT±0.3	Φd×Z	ΦT±0.3	AI	SS
RVD150	2.5	23×8	240	23×8	240	19	40
RVD200	5	22.2×8	298.4	22×8	295	32	53
RVD250	9.5	25.4×12	361.9	22×12	350	41	80
RVD320	21	25.4×12	431.8	22×12	400	62	140
RVD400	42	28.6×12	476.2	22×16	460	124	260
RVD480	76	28.6×16	539.7	26×16	515	278	490
RVD550	110	31.7×20	635	27×20	620	382	690
RVD630	172	35.1×20	749.3	30×20	725	550	1100

粒料旋转阀RVG

Pellets Type Rotary Valve RVG

应用： 安装于上下料斗或料斗与输送管线之间，作为一种计量给料或可控重力下料装置使用。特别适合用于粒料输送。

特点：

- 一体式排气口
- V型防卡料装置
- 主轴密封
- 阀体圆形进/出料口
- 根据物料粒径分布可配置开式或闭式转子
- 防尘轴承

Application:

As a metering and discharge valve under separators and bins, for pellets, or as a feeding unit in pneumatic conveying systems, specially for plastics pellets.

Feature:

- Integral leakage gas accumulator
- V-shape inlet for chopping avoid
- Sealing set with shaft seals
- Housing with large, round inlet/outlet
- Closed rotor/ Open rotor
- Deep-groove ball bearing with lifetime grease fill

转子直径：200-630mm

最高压力：0.15MPa

最高温度：250℃

材料：阀体：不锈钢或者碳钢

转子：不锈钢或者碳钢



Rotor Diameter:200-630mm

Pressure range: up to 0.15 Mpa

Temperature range: up to 250℃

Materials: Housing: Stainless Steel or Carbon Steel

Rotor: Stainless Steel or Carbon Steel

尺寸表 Dimensions

Type 型号	A(DIN) 直径	Ltr/rev 升/转	Inlet Dia. 进料口直径	Outlet Dia. 出料口直径	Weight 重量(kg)
RVG200	DN200	5	162	165	198/297
RVG250	DN250	9.5	210	191	276/406
RVG320	DN320	21	265	250	441/665
RVG400	DN400	42	316	350	817/1236
RVG480	DN480	76	360	440	1655/2330
RVG550	DN550	110	410	450	2296/2569
RVG630	DN630	172	450	416	3752/3311

高压旋转阀RVG/H

High Pressure Rotary Valve RVG/H

应用：

用于粒料气力输送中，用于低速、密相气力输送，做为加料装置使用。

特点：

- 阀体圆形进/出料口。进料口带防卡料装置
- 防尘轴承
- 一体式排气口
- 转子上的浮动径向密封
- 闭式转子
- 双唇轴封

Application:

For discharge and feeding of pellets products in dense phase & slow motion pneumatic conveying systems.

Feature:

- Housing with round inlet/outlet, chop avoiding inlet
- Deep-groove ball bearing with lifetime grease fill
- Integral leakage gas outlet
- Floating radial sealing system on the rotor
- Closed-end rotor with 10 chambers
- Double-lip seal

Rotor Diameter:

200 - 320mm

Pressure range:

up to 0.35 Mpa different pressure

Temperature range:

-25℃ to 250℃ HT version

Material:

Housing: Stainless steel or Carbon steel

Rotor: Stainless steel or Carbon steel



转子直径：200 - 320mm

使用压力：最高0.35 Mpa

使用温度：-25℃ 到 250℃

材料：

阀体：不锈钢或碳钢

转子：不锈钢或碳钢

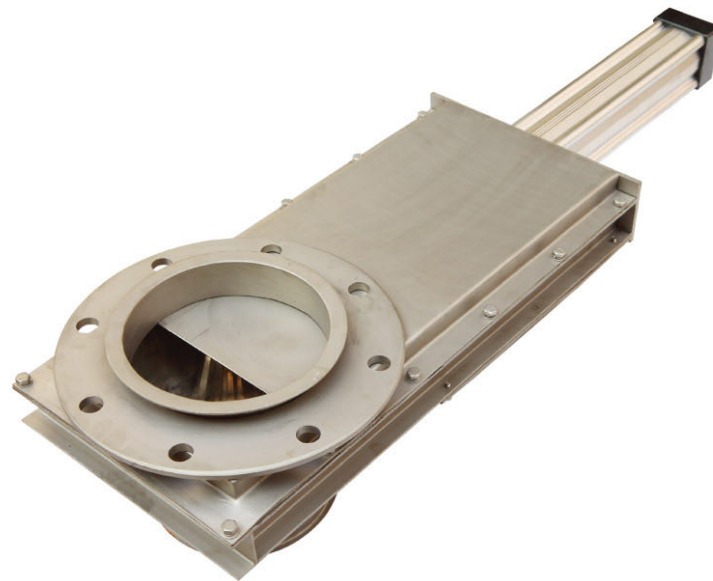
尺寸表 Dimensions

Type 型号	DIN 直径	Ltr/rev 升/转	Inlet Dia. 进料口直径	Outlet Dia. 出料口直径	Weight 重量(kg)
RVG/H200	DN200	4	162	150	208
RVG/H250	DN250	8	210	200	275
RVG/H320	DN320	18	265	250	408

插板阀SGV Slide gate Valve SGV

应用：
用于料斗或料仓下面做为自动或手动切断装置，切断固体物料从上游料斗/料仓向下游设备的流动。

Application:
as a manual or automatic closing facility under silo or bin outlet for stop flowing of bulk solid material.



特点：
结构简单，重量轻，不挂料，密封性能好。

尺寸：
DN100 到 DN350 可选择采用ISO标准 (HG20615-97;HG20592-97)

材料： 不锈钢或碳钢

使用工况： 温度：-25 到150℃； 压力：0.1 MPa

Feature:
Simple structure and light weight, no product remaining and good seals.

Size:
DN100 up to DN350 Options of ISO standard are possible.(HG20615-97;HG20592-97)

Material:
Stainless steel or Carbon steel

Operation conditions:
Temperature -25 up to 150°C; pressure : 0.1 MPa

尺寸表 Dimensions

Type 型号	Nominal Diameter 公称直径 (DN)	Thickness 安装厚度 (mm)	Weight 重量(kg)
SGV100	DN100	160	15.3
SGV150	DN150	180	20.6
SGV200	DN200	192	22.3
SGV250	DN250	197	23.7
SGV300	DN300	252	26.5
SGV350	DN350	300	38.5

旋转式结块破碎机 Rotary Lump Breakers



应用：
安装于料斗，料仓或混合机等设备的出口，用于粉状或颗粒状物料结块后的破碎。

Application:
Rotary lump breaker is designed for breaking up friable lumps and agglomerates that have formed in dry powders and granules. Commonly be installed in outlet of silo, bin or mixers.

特点：

- 通过更换筛网，可以将破碎的颗粒度减小到1.6毫米甚至更小
- 经过硬化处理的刀片使用寿命更长
- 可以提供快速清洗型号的破碎机
- 可以提供防爆型号的产品

Feature:

- Different screen sizes are possible; Pellets sizes equal to or less than 1.6mm are available.
- Hardened blades, long life-span.
- Breaker models of quick-action cleaning down are available.
- Breaker models suitable for DIP and Atex hazardous areas are available.

材料：
不锈钢或碳钢

使用工况： 温度：-25 to 150℃，
压力：0.1 MPa

Material:
Housing: Stainless steel or Carbon steel
Rotor: Stainless steel or Carbon steel

Operation Conditions:
Temperature: -25 up to 150°C;
Pressure: 0.1 MPa

螺旋加料器DSA Screw Feeder DSA

应用:

DSA系列螺旋加料器用于散装物料的机械输送或为批次性电子计量秤给料。
适合于粉料或粒料。

Application:

DSA Screw feeder is designed for bulk solids conveying or dosing of powder or pellets into batch weighing station.

螺杆直径: 100, 150, 200, 250, 300mm

Screw Diameter:100, 150, 200, 250, 300mm

材料:

与物料接触的材料为不锈钢304

Material:

All parts in contact with products are in stainless steel 304.

特点:

采用变频调速器齿轮马达驱动, 两端轴承支撑, 采用吹气密封。进料口可安装助流气碗, 用于流动性差的物料辅助下料。U型螺筒便于拆卸和清洗; 物料均化和结块打碎装置, 可以提高给料精度。不等距螺旋适合于流动性差的物料。

Feature:

Gear motor driven by frequency inverter, bearing support in two ends, shaft sealing by air purging system. Pneumatic pad installed in product inlet for discharge aid of bad flowing bulk materials. U shape barrel for easy disassemble and cleaning, product distributing and lump breaking device are beneficial to high accuracy dosing. Screw with different pitch suitable for bad flowing bulk materials.

尺寸表 Dimensions

规格升/转		Inlet flange 进口法兰																				重量(kg)	功率(kw)			
		(ANSI)				(DIN)																				
Size	Ltr/rev	ΦD1	ΦD3	Φd×Z	ΦD2	ΦD1	ΦD3	Φd×Z	ΦD2	Φd2	Φd3	T	H	h	b	C	E	F	L	L1	L2	L3	B	A	Weight	Power
100	0.58	108	228.6	19.1×8	190.5	108	220	18×8	180	114.3	228	22	160	160	52	436	172	310	1500	1982	2380	2132	137	554	240	0.5
150	2.2	159	279.4	22.4×8	241.3	159	285	22×8	240	168.3	280	22	180	165	56	494	200	355	1500	2055	2465	2205	152	645	340	1.1
200	5.7	219.1	342.9	22.4×12	298.5	219.1	340	22×12	295	219.1	343	24	220	170	60	546	225	375	2000	2600	3035	2800	182	710	510	1.5
300	19.8	323.9	482.6	25.4×12	431.8	323.9	445	22×12	400	323.9	483	31	260	175	78	687	278	420	2000	2698	3215	2898	232	895	890	2.2

管链输送TCA

Tube Chain Conveyor TCA



应用:

管链输送机是在密闭管道内输送粉状、小颗粒装及小块状等散装物料的连续输送设备, 可水平、垂直和倾斜组合输送。
管链输送机适用于塑料、橡胶、化工食品等行业。

Application:

Suitable for continuous conveying of powder, pellets and small lump materials in a closed tube loop. Horizontal, vertical inclination or its combination layout is possible. Typical application includes those dusty bulk solids conveying in plastic, rubber, chemical and food industries.

特点:

- 结构紧凑, 占用空间小, 可以三维改变输送方向, 不受地形、角度与高度的影响。
- 输送过程平滑, 物料间基本无内部运动, 破损小, 保证物料品质, 适合腐蚀性物料。
- 不会产生系统堵塞, 适合输送多种形态的物料。
- 对混合物料的输送, 不会产生物料分层现象。
- 输送能力大、能耗低、大大降低设备运行成本。
- 所有运动部件全部在密闭的空间运行, 安全可靠。
- 可实现远距离输送, 可随意分布多个进、出口料口, 满足工艺需求。
- 易于实现集中控制、提高自动化程度。

Feature:

- Compact size, small size required, conveying direction can be changed in 3-dimension (horizontal, vertical and inclined distance)
- Smooth conveying, lower internal fractions of particles ensures lower damage to material, and suitable for abrasive material.
- No tube blocking happens; a large range of materials are suitable.
- No segregation happens for mixed materials.
- High capacity and lower power consumption, which makes a lower operation cost.
- All moving parts work in tube, high safety and high reliability
- Easy for long distance transportation, multiple material inlet and outlet design is possible to meet different process.
- To be easily integrated to an industrial plant for automatic working.

排气过滤器VF

Ventilation Filter Type VF

应用：

连接排气风机，组成排气过滤装置，作为粉尘收集器使用。也可以作为粉料气力输送末端的气固分离设备。安装在料仓上部，分离物料，排出气体。

特点：

- 全自动压缩空气反吹清洗式集成过滤器
- 标准化设计模块，可根据需要优化组合出10余种规格的过滤器
- 集成式过滤单元，方便拆卸和过滤元件的清洗和更换。
- 既可以选择滤袋，也可以选择滤芯作为过滤元件。
- 根据需要可选择碳钢或不锈钢制造
- 高效的过滤和清洗效率，得益于特殊设计的反吹系统和滤料
- 所有过滤器出厂前都已经装配完成并经过各种测试

Application:

Connected to an exhaust fan to be an aspiration filter, work as dust collector, or work as filtration equipment at the end of pneumatic conveying line for separation of gas and bulk solid product. Normally installed on top of silo to remain product and release conveying gas.

Feature:

- Fully automatic compact filter with cleaning by compressed air
- Optimum adaption to the operational requirements by means of 10 filter types with standardized components
- Compact filter unit for easy disassemble, replacement and cleaning.
- Filter unit could be bag or cartridge type.
- Filter made of carbon steel or stainless steel
- Highly efficient dust extraction by special filter elements or filtering materials
- All filters pre-assembled and tested for function at the factory

尺寸表 Dimensions

型号 Type	A	B	C	E	F	H1	H2	ΦD1	ΦD2	ΦD3	ΦD4	n	Φd	过滤面积 布袋 bag	Filter area(m²) 滤芯 Cartridge	布袋数量 Filter bag Qty	滤芯数量 Cartridge Qty	脉冲阀数量 Diaphragm valve Qty	重量(kg) weight
VF-1.8-11-2	650	360	760	145	400	1060	840	406	456	506	76	8	14	1.8	5.8	11	2	2	60
VF-2.4-15-2	950	470	806	145	436	1370	1140	522	572	622	76	12	18	2.4	7.7	15	2	2	100
VF-3.5-23-3	1050	655	980	145	506	1500	1240	670	720	770	96	16	18	3.5	11	23	4	3	120
VF-5.0-29-4	1165	750	1100	185	570	1620	1350	800	850	900	96	16	18	5	14.5	29	4	4	155
VF-7.0-37-6	1255	820	1190	185	620	1700	1440	900	950	1000	125	16	18	7	20	37	8	6	200
VF-7.0-47-8	1316	880	1270	185	685	1700	1500	1000	1050	1100	125	16	18	10	27	47	8	8	260



袋式过滤器BF

Bin Filter Type BF

应用：

作为粉料气力输送末端的气固分离设备。安装在料仓上部，分离物料，排出气体。

特点：

- 全自动压缩空气反吹清洗式集成过滤器
- 标准化设计模块，可根据需要优化组合出40余种规格的过滤器
- 特殊设计的滤袋形式
- 过滤器壳体的设计可承受一定的负压和正压。可根据需要设置爆破片，或按照压力容器设计
- 根据需要可选择碳钢或不锈钢制造
- 高效的过滤和清洗效率，得益于特殊设计的反吹系统和滤料
- 所有过滤器出厂前都已经装配完成并经过各种测试



Application:

Work as filtration equipment at the end of pneumatic conveying line for separation of gas and bulk solid product. Normally installed on top of silo to remain product and release conveying gas.

Feature:

- Fully automatic compact filter with cleaning by compressed air
- Optimum adaption to the operational requirements by means of filter types with standardized components
- Special constructions of all filter types for tailor-made design
- Filter housings of vacuum design or resistant to shot peak pressures installed with bursting disc or as pressure vessel
- Filter made of carbon steel or stainless steel
- Highly efficient dust extraction by special filter elements or filtering materials
- All filters pre-assembled and tested for function at the factory

尺寸表 Dimensions

Type 型号	Filter Area 面积(m²)	Weight 重量(kg)
BF46-12-8-11	46	1040
BF54-12-8-13	54	1090
BF63-12-8-15	63	1140
BF76-12-8-18	76	1210
BF63-16-8-11	63	1290
BF74-16-8-13	74	1330
BF86-16-8-15	86	1365
BF103-16-8-18	103	1470
BF72-16-8-11	72	1580
BF85-16-8-13	85	1650
BF98-16-8-15	98	1715
BF118-16-8-18	118	1770

Type 型号	Filter Area 面积(m²)	Weight 重量(kg)
BF85-32-8-11	85	1840
BF100-32-8-13	100	1870
BF116-32-8-15	116	1915
BF140-32-8-18	140	2000
BF98-32-8-11	98	1870
BF116-32-8-13	116	1950
BF134-32-8-15	134	2000
BF160-32-8-18	160	2105
BF116-40-8-11	116	1890
BF138-40-8-13	138	1970
BF158-40-8-15	158	2040
BF190-40-8-18	190	2140

粉尘收集器DC Dust Collector DC

应用：

连接风机，组成粉尘收集系统。用于化工、塑料、水泥、建材，冶金和发电厂等各种行业的通风除尘和环境保护使用。

特点：

- 全自动压缩空气反吹清洗式集成过滤器
- 标准化设计模块，可根据需要优化组合出40余种规格的过滤器
- 过滤单元根据需要可选择滤袋或滤芯
- 过滤器壳体的设计可承受一定的负压。
- 根据需要可选择碳钢或不锈钢制造
- 高效的过滤和清洗效率，得益于特殊设计的反吹系统和滤料
- 可选择在线（旋转阀/螺旋输送机）或离线（灰斗）清灰方式

Application:

Connected with exhaust fan to be an aspiration system for dust collection. Suitable for Chemical, plastic, cement, metallurgical and electrical power industries as dust collection and environment protection equipment.

Feature:

- Fully automatic compact filter with cleaning by compressed air
- Optimum adaption to the operational requirements by means of 40 filter types with standardized components
- Special constructions of all filter types for tailor-made design
- Filter bag or cartridge are used as filter unit according to customer requirements.
- Filter housings of vacuum design
- Filter made of carbon steel or stainless steel
- Optional dust cleaning: inline (rotary valve/screw conveyor) or outline (dust container)

技术参数表 Specification

型号(Type)	DC-24-32-4	DC-36-48-6	DC-48-64-8	DC-60-80-10	DC-72-96-12	DC-84-112-14
技术参数 Specification						
处理风量(m³/h) Gas Flow	1500~2000	2100~3200	2900~4300	4000~6000	5200~7000	6000~9000
总过滤面积 Filter Area	24	36	48	60	72	84
滤袋数量(条) Q'ty Of Filter Bag	32	48	64	80	96	112
入口气体温度 Inlet Temp.	≤120℃					
设备阻力(Pa) Pressure Drop	≤1200					
出口排放浓度(mg/m³) Outlet Dust Content	≤30					
清灰压力(MPa) Dust Emission	0.5~0.7					
压缩空气耗气量(m³/min) Purge Gas Consumption	0.1	0.14	0.2	0.24	0.29	0.34
脉冲阀数量 Q'ty of Diaphragm Valve	4	6	8	10	12	14
风机用电机功率 Blower Power	1.5	3	3	5.5	5.5	7.5
重量(weight)	A型(带灰斗)/With Dust Container (kg)	1350	1620	1850	2360	3200
	B型(不带灰斗)/Without Dust Container	1220	1470	1670	2150	2880



助剂电子秤ADW Additives Weighing Station ADW

应用：

用于粉、粒状物料的批次称量。
适合于自动配料系统中，对各种助剂进行精确计量。

Application:

Suitable for high accuracy weighing of powders or granules in an automatic dosing and weighing system.



特点：

- 采用高精度弯曲梁式压力传感器，确保称量精确；
- 采用合成橡胶料斗，和气动敲击器，确保排料彻底，无挂料。
- 带有传感器保护机构，可防止安装和运输过程中传感器受到损坏。

Feature:

- Precise single ended beam load cells are used for high accuracy weighing;
- Rubber weighing hopper and pneumatic knocker to make sure totally product discharged.
- Special designed load cell protection device to avoid damage of load cells during installation and transportation.

小料配料机

Additives Batching Scale ABS



应用:

用于多种粉、粒状物料按设定比例进行精确配料。适用于塑料、食品、化工等行业。
典型应用于PVC制品行业，为辅料添加剂进行自动精确配料。

Application:

For multiple ingredients weighing with high accuracy. It is suitable for various bulk solids such as powders and granules. It can be used in plastics, food staff and chemical industries.
Typical application is the automatic and high accuracy batching of additives in PVC processing industry.

特点:

- 所有与物料接触部份材质均为不锈钢，不污染物料；
- 一次最多可配8个组份的小料；
- 配料准确，精度高，单个组份误差小于10克；
- 配料速度快，小时总配料量可达800公斤；
- 自动化程度高，只需一人操作，节约人力成本；
- 设定并存储多种配方，可随时调用；
- 多权限密码管理，保密性强。

可选项:

- 配除尘装置，倒料口、称量口无粉尘外溢；
- 组份数量：可选4-11个组份。

Feature:

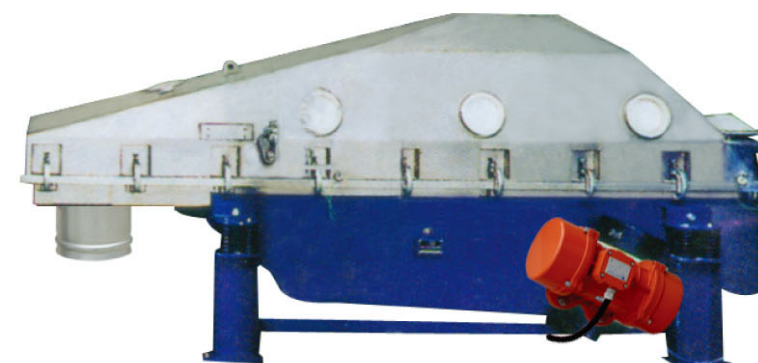
- All parts in contact with the product are in stainless steel to avoid contamination
- Up to eight ingredients can be weighted
- High accuracy low tolerance, maximum tolerance of individual ingredients will be 10 gram
- Batching capacity up to 800 kg/h
- Automatic and manual operation mode. One operator is enough
- Multiple recipes can be set and saved and are available at any time.
- Multi-authority password management, multi-level protection

Options:

- De-dusting system for dust free operation when dosing and debagging
- More or less ingredients is possible, available range is 4 to 11

振动流化床冷却 / 干燥机FBS

Vibration Fluid-bed Cooler/Dryer FBS



应用:

用于化工、塑料、食品等行业冷却或干燥易粘连、易结块、易碎和磨蚀性颗粒物料。

Application:

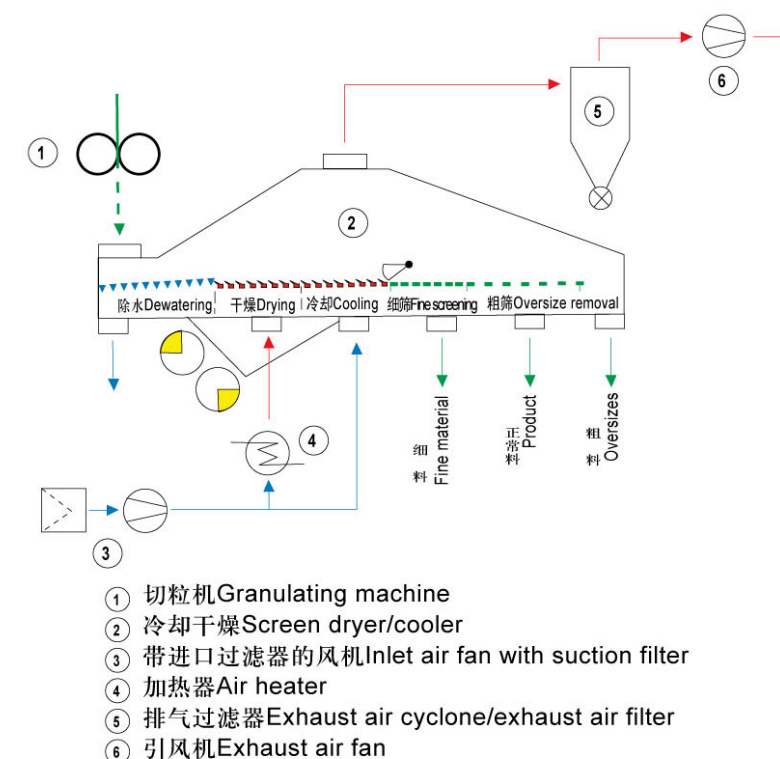
For Chemical, plastic and food Industries, cooling or drying of adhere, abrasive or brittle granulate, or granulate with tendency to agglomerate.

特点:

将流化床冷却器 / 干燥器和振动筛结合在一起，在一道工序中可以完成冷却或干燥、筛分、去除水分等功能。
由于有足够的风速流过任意单一物料颗粒周围，换热效率更高，热交换过程更加快速和彻底。这使得干燥和冷却过程既不损坏物料颗粒也更节省能源。

Feature:

A combination of a fluid-bed cooler/dryer and a screening machine, integrate several process step: screening, drying or cooling, dewatering in a single unit.
Due to there is enough gas flows over the entire surface of each individual particle, resulting in high heat transfer coefficient, shorten cooling or drying time. This means, granulate damage will be avoid and emerge saving is possible.



技术参数表 Specification

Type 型号	Screen Area 流化床面积 (m²)	Inlet Temperature 进风温度(℃)	Outlet Temperature 出风温度(℃)	Water Evaporated 水蒸发量(kg)	P 电机功率(kw)	Weight 重量(kg)
FBS-20/7	1.5	100-120 ℃	40-60 ℃	35	2x0.55	208
FBS-25/8	2	100-120 ℃	40-60 ℃	50	2x0.75	275
FBS-30/8	2.5	100-120 ℃	40-60 ℃	60	2x1.1	408

振动筛S10/5-II

Vibration Screen S10/5-II



应用：

适合于化工行业、塑料行业、食品和制药行业。用于粉粒料的筛分。特别适合于流动性差、易粘连的物料的筛分。

Application:

suitable for powders and granules separation in chemical Industry, plastic Industry, food and pharmaceutical Industry. Especially good at separation of non-free flowing and adhering bulk solid material.

特点：

- 采用模块化设计，在同一机体上可以安装单层或双层筛网。更换筛网也很方便。
- 两个振动电机安装在机体的两侧，使得筛分效率大大提高。电机维修和调整也很方便。
- 采用了快速卡具，可以方便的拆卸和更换筛网。
- 采用了大面积有机玻璃可移动式观察窗，可以方便的观察物料筛分状态且便于手工清理筛面。
- 配置了气锤系统，可以有效的防止筛孔堵塞。
- 进料口设置了分流锥，可以使物料均匀的覆盖全部筛面，使得筛分更彻底。

Feature:

- Modular design makes it possible to install single screen or double screen in the same frame. Screen exchange is also easier.
- Two vibration motors installed in two side of frame to achieve a high efficiency of separation due to bigger horizontal acceleration. Motor adjustment and maintenance becomes easier.
- Quick release fixtures makes easy disassembly and screen exchange.
- Large top inspection windows available for visualization of product flowing and manual cleaning of screen.
- Pneumatic knocker installed for automatic cleaning of screens to prevent block of screen holes.
- A conical device installed inside of product inlet to make sure an even flowing of product around the screen.

技术参数表 Specification

Profile Dimension 外形尺寸 (mm)	1950×1080×930
Net Weight 净重 (kg)	350
Upper Screen Dimension 上筛网尺寸 (mm)	1667×580×510
The Small Hole Working Area 小孔有效面积 (mm)	700×530
The Small Hole Dimention 小孔尺寸 (mm)	2×2 (optional 可另选)
The Large Hole Working Area 大孔有效面积 (mm)	850×530
The Large Hole Dimention 大孔尺寸 (mm)	Φ6.35(optional 可另选)
Motor Power 电机功率 (kw)	0.25
Speed 转速 (RMP)	960
Maximal Vibrating Force 最大激振力 (kg)	308
Stroke Of Vibration 振幅 (mm)	4
Screening Throughput 筛分产量 (TPU)	1.5t/h(TPU)

卧式双螺带混合机WHS

Horizontal Double Ribbon Blender WHS



应用：

适用于塑料、化工、食品等行业，用于粒状或粉状物料与添加剂或颜料的混合，也可以用于固态粉料和少量液态添加剂的混合。典型应用如：塑料着色、PVC粉料干混、共混物和填充物的初混。也可作为物料冷却设备使用。

规格从300L到15000L

Application:

Suitable for plastic, chemical and food Industries. Work as blending equipment for powder or pellet with additives or color pigment. Can also blending for solid powder with minority liquid additives. Typical applications includes: Plastics coloring, PVC dry blending, pre mixing of compounds with fillers. Can be work as cooler for bulk solid material. Size rang from 300L up to 15,000L

特点：

双螺带的搅拌桨，使得混合、分散效果更好；低速混合，没有摩擦热产生，非常适合于需要限制混合温度的物料初混、二次混合、着色等。

上盖可以全部开启，方便清理混合机内部；吹气式轴承密封，可以保证粉料不会进入轴承。

Feature:

Special designed double ribbon agitator benefit to excellent blending and distribution. Low speed mixing with lower heat generated, suitable heat-sensitive product and low temperature processes.

Totally open lid for easy clean. Shaft sealing by purging air to prevent fine powder go into bearing.



技术参数表 Specification

Model 型号	Working Capality 有效容积(M³)	Net Volume (kg) 批次最大产量	Speed (rpm) 转速	Power (kw) 驱动功率	Weight (kg) 设备重量	L	W	H
WHS300	0.18	180	62	5.5	550	2030	630	980
WHS500	0.3	300	62	7.5	900	2320	730	1130
WHS1000	0.6	600	49	11	1600	3140	980	1400
WHS1500	0.9	900	47	15	1800	3300	1050	1550
WHS2000	1.2	1200	33	15	2500	3460	1200	1650
WHS3000	1.8	1800	33	18.5	3400	3850	1300	1700
WHS4000	2.4	2500	27	22	4000	4450	1400	2000
WHS5000	3	3000	27	30	4680	4760	1550	2100
WHS6000	3.6	3600	27	37	5600	5230	1650	2200
WHS8000	4.8	4800	22	45	6500	5380	1720	2500
WHS10000	6	6000	22	55	7800	5520	1750	2650
WHS15000	9	9000	14	75	11000	5820	2000	2900

犁刀混合机WHP

Shovel & Chopper Blender WHP

应用：

处理散状物料（粉状，粒状，纤维状）
将液体料附着在固体物料表面（液体料+粒料）
处理可泵送的浆料

Application:

Processing bulk materials(powdery, granular, fibrous)
Supply of liquids to the dry solid materials(moistening + granulating)
Processing pumpable materials

特点：

- 混合质量高
- 混合时间短
- 混合过程平稳
- 实用性高
- 使用及维护成本低
- 内部清理方便快捷

Feature:

- Highest quality mixes
- Short mixing times
- Gentle treatment of the product
- Maximum availability
- Low maintenance mixer concept
- Easy accessibility to all inside parts of the mixer



技术参数表 Specification

Model 型号	Drum Volume 筒体总容积(l)	Net Volume 净容积(l)	Shaft Motor 主轴电机(kw)	Tool Speed 桨叶速度(r/min)	Chopper Motor 飞刀电机(kw)	Batch Weight 单批物料重量(kg)
WHP200	200	100-120	4-5.5	135	1.5/2只	100-120
WHP500	500	250-300	5.5-7.5	89	1.5/2只	250-300
WHP1000	1000	500-600	7.5-11	83	3/3只	500-600
WHP1500	1500	750-900	11-15	83	3/3只	750-900
WHP2000	2000	1000-1200	15-22	65	3/3只	1000-1200
WHP3000	3000	1500-1800	18.5-30	53	4/4只	1500-1800
WHP4000	4000	2000-2400	22-37	53	4/4只	2000-2400
WHP5000	5000	2500-3000	30-45	47	4/4只	2500-3000
WHP6000	6000	3000-3600	37-55	47	4/4只	3000-3600

热/冷混合机组RH/LH

Heating/Cooling Mixer Combination RH/LH



应用：

适用于塑料、橡胶、化工、食品等行业，粉、粒状物料的混合、着色和干燥。典型应用于PVC干混料的制备、塑料填充改性、挤出机造粒前的初混、木塑生产前的多组分混合等。

Application:

Suitable for plastics, rubber, chemical and food industry, for powder or granulate material blending, coloring and drying. Typical application includes: Production of PVC dry blend, filling and modification of plastics, pre-mixing of compounding process and premix of Wood-Plastic Composites.

特点：

- 所有与物料接触部位都采用不锈钢或铝合金，不会对物料污染。
- 冷却效率高、混合时间短、清理方便快捷，能实现高效高产。
- 提高了冷却效率，减少了水的消耗。
- 搅拌桨可按不同用途进行设计制造。
- 搅拌桨耐磨涂层，增加使用寿命，并通过动、静平衡试验，运行平稳。
- 快速、完善的售后服务。

Feature:

- All material in contact with product is in SS304 or aluminum alloy and the product will not be contaminated.
- High cooling efficiency, short mixing time, easy and convenient to clean, and can reach high output.
- Improved cooling efficiency and reduced water consumption.
- Mixing tool can be designed according to different application.
- Mixing tool coated with wear-resistant material, which can increase service life and pass dynamic and static balance test, running smoothly.
- Rapid, perfect after-sales service.

技术参数表 Specification

Model 型号	Bowl Volume Total/Effective 锅体容积总容积/净容积(l)	Motor Rating 驱动功率(kw)	Tool Speed 桨叶速度(RPM)	Batch Weight 单批物料重量(kg)	Model 型号	Bowl Volume Total/Effective 锅体容积总容积/净容积(l)	Motor Rating 驱动功率(kw)	Tool Speed 桨叶速度(RPM)
RH300	300/240	75/90	900	120	LH1000	1000/700	15/18.5	117
RH500	500/400	90/110	660	200	LH1800	1800/1260	15/18.5	85
RH600	600/480	100/132	660	240	LH2100	2100/1470	18.5/22	75
RH800	800/640	132/160	643	320	LH3000	3000/2100	22/30	56
RH1000	1000/800	160/200	610	400	LH3500	3500/2450	30/37	51
RH1200	1200/960	200/250	520	480	LH4200	4200/2940	37/45	47
RH1500	1500/1200	250/315	490	600	LH5000	5000/3500	45/55	41
RH2000	2000/1600	315/355	500	800	LH6000	6000/4200	45/55	41

真空吸料机VLF/VLG

Vacuum Hopper Loader VLF/VLG

应用:

用于挤出机或其他塑料加工机械的供料, 或者给料斗, 料仓等储存设备供料。特别适合于输送粉料、或者含有部分粉料的颗粒料和片状料。可以单机使用, 也可以同其他设备构成一体化的输送系统。

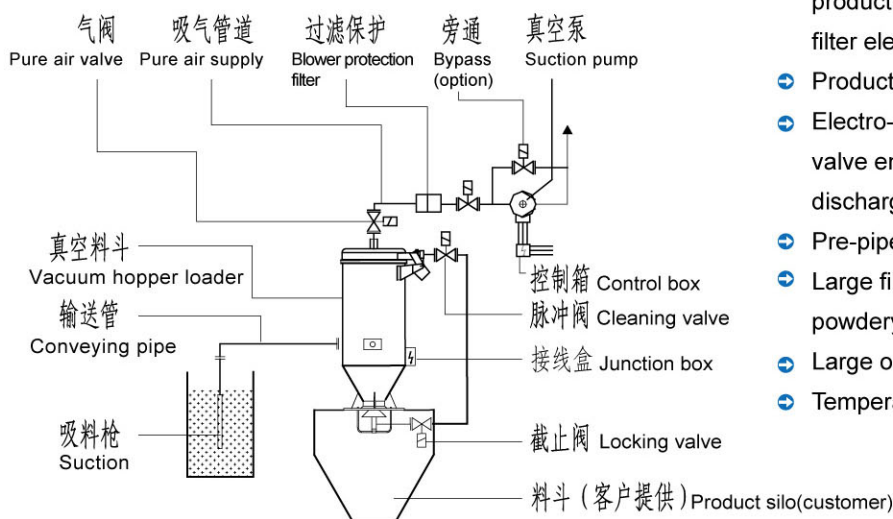
Application:

Universal unit for automatic feeding of extruders, processing machines, hoppers and storage silos. Handles powders, pellets or granular/flaked products with some powder content. Use as stand-alone unit or integrate into complete feeding systems.

特点:

- 高效的压缩空气反吹布袋清理系统
- 过滤单元可作为整体拆卸, 使得布袋维修更换和物料颜色更换更方便
- 接触物料的部件都是不锈钢材料
- 气动锥形阀作为排料装置, 使得密封和排料都更可靠
- 管道和接线在出厂时都已经连接好
- 大的过滤面积特别适合粉料使用
- 加大的排料口
- 使用温度: -10°C 到 $+80^{\circ}\text{C}$

VLF200	VLF500	VLF1000	
VLG400	VLG600	VLG800	VLG1000



Feature:

- High efficiency bag filter with reverse-jet cleaning
- Filter plate removed in one piece for easy product changes & easy access for servicing the filter elements
- Product-contacted parts of stainless steel
- Electro-pneumatically operated conical discharge valve ensure a reliable sealing and product discharge
- Pre-piped and pre-wired ready for operation
- Large filter surface area specifically designed for powdery products.
- Large outlet diameter
- Temperature range: -10°C up to $+80^{\circ}\text{C}$

气力输送系统

Pneumatic Conveying System

应用:

气力输送可以定义为, 采用空气或其他流体介质将粉状, 颗粒状物料, 或散装的商品, 沿限定的通道进行输送的一种手段。

气力输送系统具有以下特点:

- 输送线路、管道配置灵活、不受路径条件限制;
- 密闭的输送管线, 不受气候和周围条件的影响, 避免物料受潮、污损、混入异物;
- 输送过程无粉尘飞扬, 易于实现环保要求;
- 在输送过程中可同时实现多种工艺操作过程, 如混合、粉碎、分级、干燥、冷却、除尘等;
- 可以进行长距离的集中和分散输送;
- 设备简单, 操作维修保养方便;
- 项目投资和维护费用少;
- 易于实现自动化, 所需工作人员少, 人力和管理费用小。

气力输送形式:

- 气力输送系统按输送管道内压力分: 正压、负压、正压负压组合系统。
- 按物料的输送状态 (固气比) 分: 稀相、密相, 半密相等系统。

Categories of Pneumatic Conveying:

- Classified by pressure inside the pipe: Positive Pressure Systems, Negative Pressure Systems, Combination Positive/Negative Pressure Systems.
- Classified by solid/gas ratio of the material: Dilute, dense and half-dense conveying.

气力输送功能表 Performance

Type 输送形式	Positive/Negative 正/负压	Convey pressure 输送压力 Kpa	Gas velocity 气流速度	Solid to gas ratio 固气比 (W/W)	Particle size 物料粒径 (mm)
Dilute Phase Conveying 稀相输送	Positive pressure	10~100	20~40	1~10	0~10
	Negative pressure	-10~-70	15~30	1~10	0~10
Dense Phase Conveying 密相输送	Positive pressure	100~500	4~40	10~40	0~10
	Negative pressure	-10~-200	4~40	10~40	0.5~10

正压气力输送系统(稀相)

Positive Pressure Conveying System (Dilute Phase)

应用:

正压输送系统可以定义为采用吹气的方式沿限定通道输送粉状或颗粒状物料的方法。因为输送管道内气体的压力为正值而得名。

Application:

Positive pressure conveying system is a type of pneumatic conveying. It may be defined as the transportation of powder or granules through a confined channel (e.g. pipeline) by means of blowing air or other gas (e.g. Nitrogen, Carbon dioxide). This definition is also because of the air or gas inside the channel is in positive pressure.

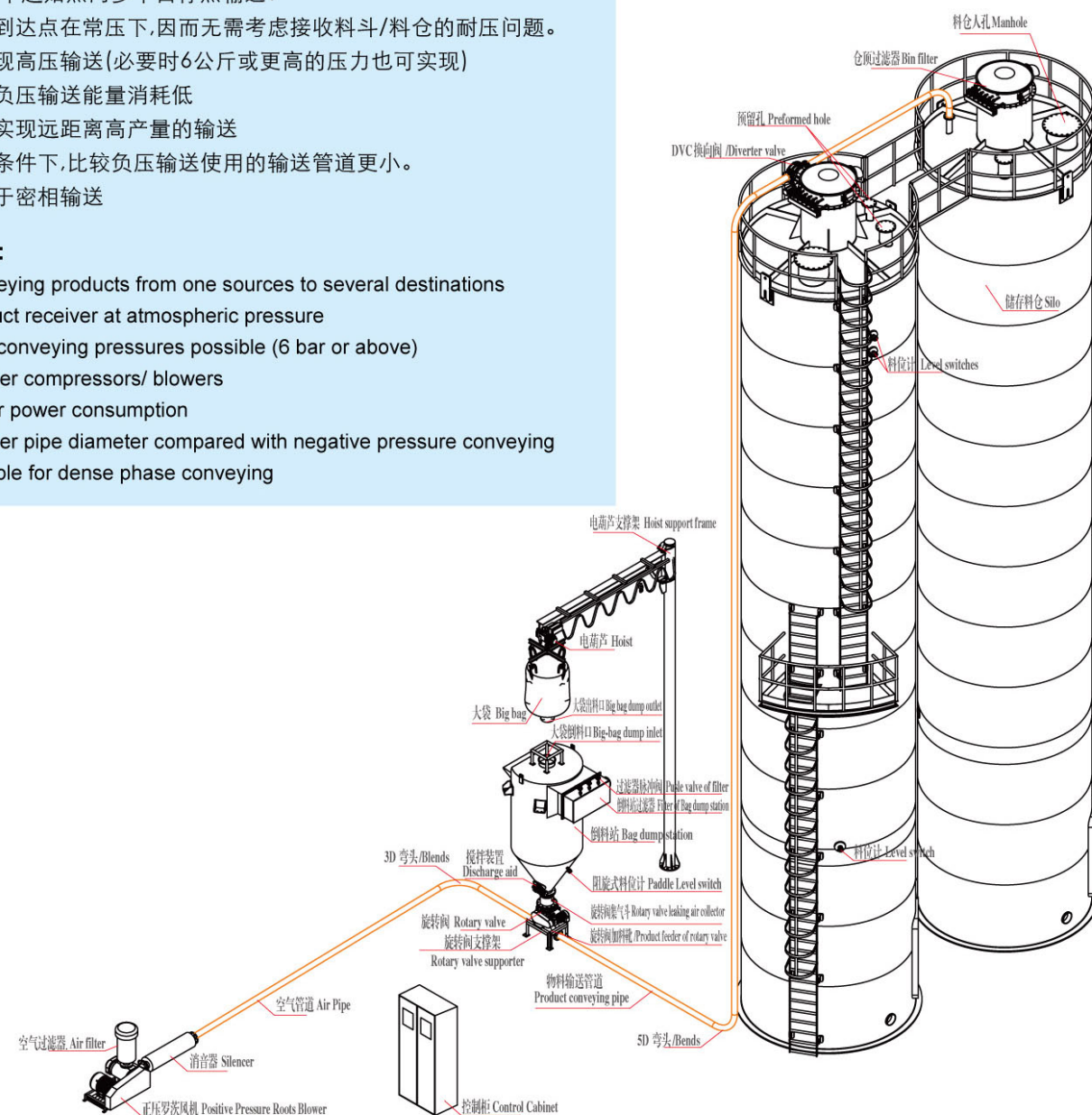
特点:

可以从一个起始点向多个目标点输送:

- 物料到达点在常压下,因而无需考虑接收料斗/料仓的耐压问题。
- 可实现高压输送(必要时6公斤或更高的压力也可实现)
- 相对负压输送能量消耗低
- 可以实现远距离高产量的输送
- 同等条件下,比较负压输送使用的输送管道更小。
- 适合于密相输送

Feature:

- Conveying products from one sources to several destinations
- Product receiver at atmospheric pressure
- High conveying pressures possible (6 bar or above)
- Smaller compressors/ blowers
- Lower power consumption
- Smaller pipe diameter compared with negative pressure conveying
- Suitable for dense phase conveying



负压输送系统(稀相)

Negative Pressure Conveying System (Dilute Phase)

应用:

负压输送系统可以定义为采用吸气的方式沿限定通道输送粉状或颗粒状物料的方法。因为输送管道内气体的压力为负值而得名。

Application:

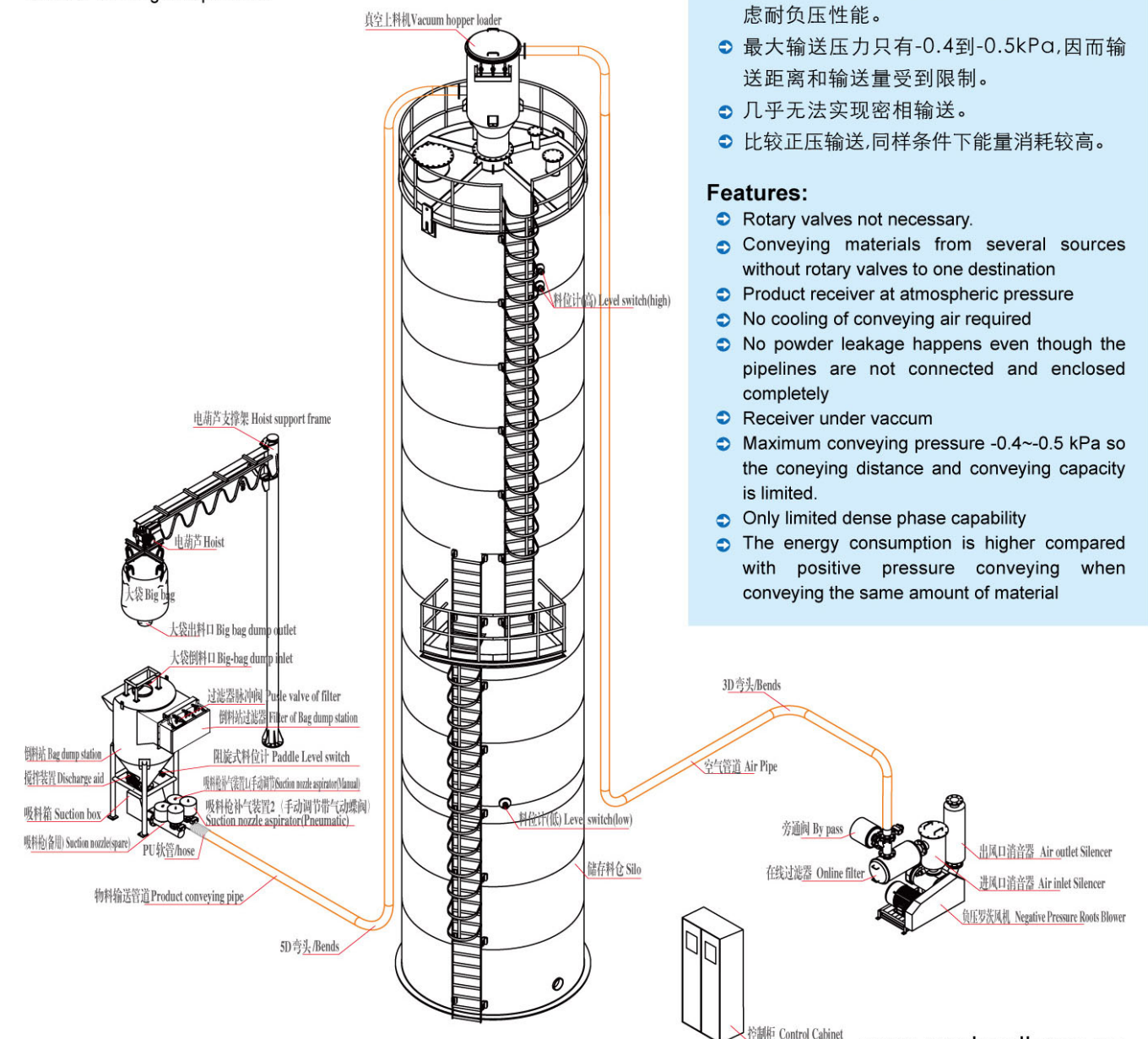
Negative pressure conveying system is another type of pneumatic conveying. It may be defined as the transportation of powder or granular through a confined channel (e.g. pipeline) by means of suction air or other gas (e.g. Nitrogen, Carbon dioxide). This definition is also because of the air or gas inside the channel is in negative pressure.

特点:

- 不需要旋转阀。
- 可以从数个起始点向一个目标点输送。
- 物料在常压下进入管道,因而物料加入比较容易。
- 输送过程中不需要对输送气体进行冷却。
- 即便管道连接和密封不好,也不会造成粉料外泄。
- 物料接收料斗始终处在负压状态,需要考虑耐负压性能。
- 最大输送压力只有-0.4到-0.5kPa,因而输送距离和输送量受到限制。
- 几乎无法实现密相输送。
- 比较正压输送,同样条件下能量消耗较高。

Features:

- Rotary valves not necessary.
- Conveying materials from several sources without rotary valves to one destination
- Product receiver at atmospheric pressure
- No cooling of conveying air required
- No powder leakage happens even though the pipelines are not connected and enclosed completely
- Receiver under vacuum
- Maximum conveying pressure -0.4~-0.5 kPa so the conveying distance and conveying capacity is limited.
- Only limited dense phase capability
- The energy consumption is higher compared with positive pressure conveying when conveying the same amount of material



粒料低速气流输送系统（密相）

Slow Motion Conveying System for Granules (Dense phase)

应用：

- 防止物料产生粉尘与拉丝现象；
- 适应于易碎物料；
- 最大程度减少物料的高度摩擦；
- 典型应用于塑料颗粒的输送，特别是聚丙烯和聚酯塑料的应用。

Application:

- Keeping the products free from dust and generation of streamers.
- A good production for fragile products.
- Maximum reduce of friction between products and pipelines.
- Typically applied for the conveying of plastic granules, especially for the polyolefin and polyester plastics.

特点：

气力速度低、无灰尘、摩擦少、无拉丝现象产生、塑料颗粒不会被破坏。

Feature:

Lower velocity; lower dust and no angle hair generation, the plastic granules are not easily damaged.



低速气流输送的优点

Advantages of dense phase slow motion conveying

	密相低速气流输送 Dense phase slow motion	稀相输送 Dilute phase
拉丝的产生 Generation of streamers	可以避免 Avoided	取决于物料特性 Depends on product grade
粉尘的产生 Generation of fines	很少 Much less	很多 Much more
管道处理 Pipe treatment	普通管道 Smooth pipes	喷丸管 Shot-peened
管道维护 Maintenance of pipes	不需要 No	需要检查是否破损 Wear & tear
料/气分离 Product/gas Separation	不需要 Not necessary	需要 Always
噪音 Noise level	低 Lower	高 Higher
断电和急停车后重启 Restart after power failure/emergency stop	很容易 Easy restart	堵管 Pipe plugged
过滤器面积 Filter cloth area	小 Much smaller	大 Much larger
旋转阀 Rotary valves	高压型 High pressure version	低压型 Low pressure version

高压发送罐输送系统（密相）

High-pressure Blow Tank Conveying System (Dense phase)

应用：

高压发送罐输送系统又称仓泵输送系统，它是正压气力输送系统中的一种，通常以密相形式进行输送。

相对于传统的正压输送系统，高压发送罐输送系统采用发送罐而不是旋转阀或文丘里管作为物料加入装置。此外，发送罐输送系统的输送压力相对较高，固气比相对较高。

应用于输送粉料、粒料，尤其适用于流动性不好的物料长距离、高效率的输送。

Application:

High pressure blow tank conveying system, also called pressure vessel conveying system, is a type of positive pressure pneumatic conveying system. Products in conveying line is normally in dense phase.

The difference between high pressure blow tank conveying system and other traditional positive pressure system is that the products feeding device in this system will be single or multiple blow tanks instead of rotary valves or Venturi nozzles. In addition, the conveying gas pressure in this system will be relatively higher than that of traditional positive pressure system, the solid to gas ratio is also relatively higher.

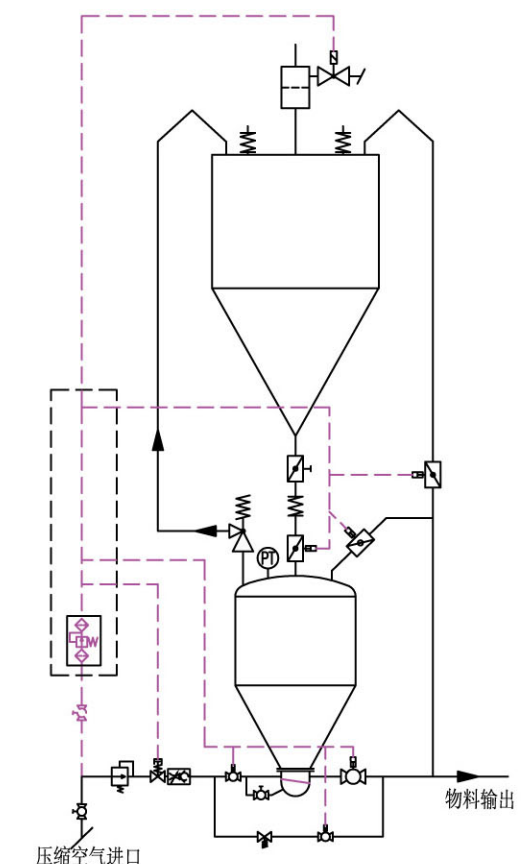
For the conveying of powders or granules, especially for the long-distance and high efficient conveying of products with bad flowing property.

特点：

- 高固气比带来高的输送效率
- 采用高压气体进行输送，耗气量少，运行成本低
- 输送距离从几米到几公里都可以
- 较低的气流速度降低了管道的磨损，也可避免脆性颗粒与管壁激烈撞击而产生破碎。
- 系统中没有运动部件，故障少，维护费用低
- 对于化学性质不稳定的物料，可以用特定的气体进行输送
- 密闭的输送管线，不受气候和周围条件的影响，避免物料受潮、污损、混入异物
- 多个发送罐可以组合使用，满足用户不同的输送要求

Feature:

- High conveying efficiency thanks to high solid to gas ratio
- Lower gas consumption and lower operation cost because of higher pressure and lower gas flow
- Conveying distance from several meters to several kilometers
- Lower pipeline tear & wear as a result of lower gas velocity. Less pipeline tear & wear and a better protection of fragile granules as a result of lower gas velocity.
- Rare malfunction and low maintenance cost because there is no moving part.
- Products with unstable chemical properties can be conveyed by special gas
- Enclosed conveying pipelines, not limited by climate and ambient condition, the products are free from dampness, contamination, and intrusion of foreign matters.
- Combination of multiple blow tanks for different conveying requirements



PVC全自动配料、混料、输送系统

PVC Automatic Mixing, Batching and Extruder Feeding System

